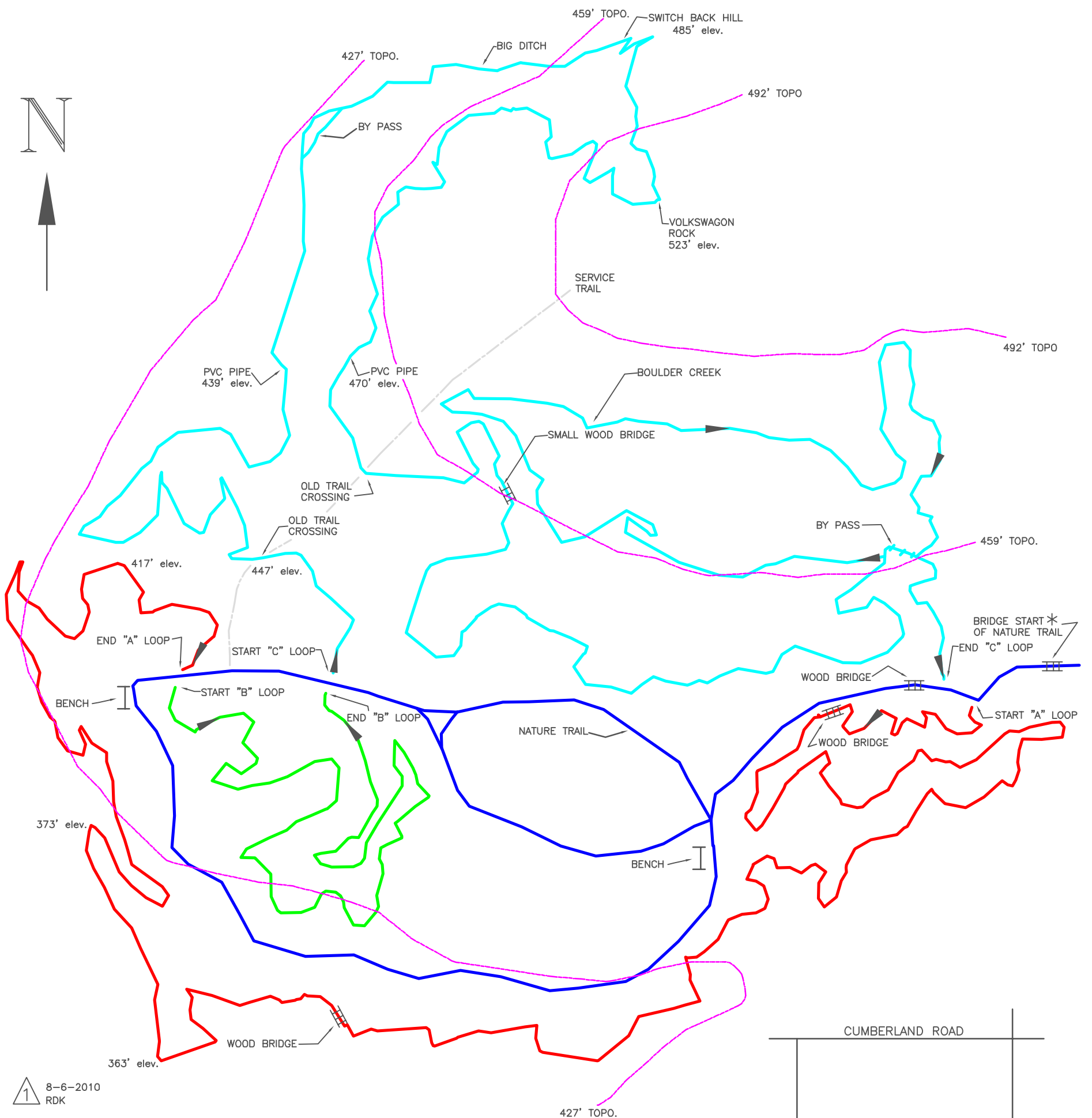


FAULKNER PARK TYLER TEXAS MOUNTAIN BIKE TRAILS



1 8-6-2010
RDK

- HOOT AND HOLLAR (LOOP "A") 2.1 MILES
- BLACKBERRY PATCH (LOOP "B") .9 MILES
- SLEEPING GIANTS (LOOP "C") 3.5 MILES (WITH BY PASS 2.5) MILES
- NATURE TRAIL
- SERVICE TRAIL
- TOPO ELEV.

